

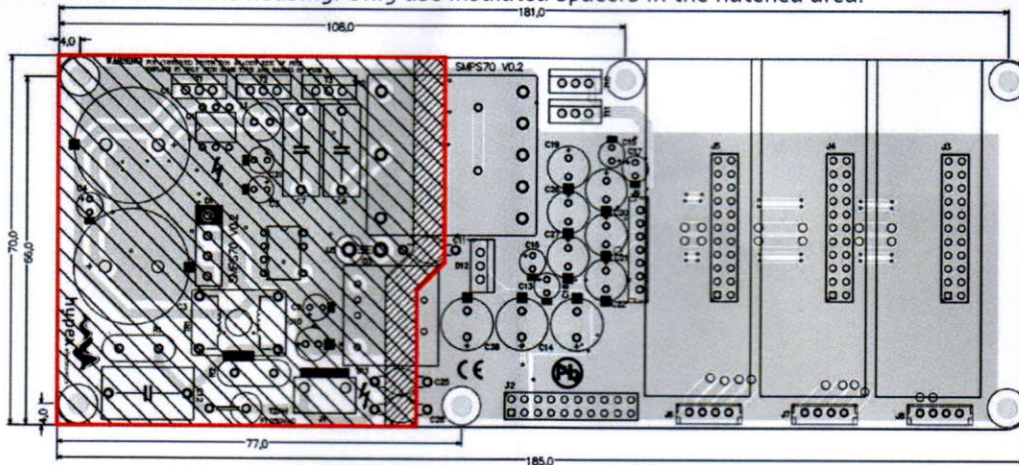
Safety precautions



The UcD3xMP operates at mains voltage and carries hazardous voltages at accessible parts. These parts may never be exposed to inadvertent touch. Observe extreme care during installation and never touch any part of the unit while it is connected to the mains. Disconnect the unit from the mains and allow all capacitors to discharge for **10 minutes before handling it.**

This product has no serviceable parts.

This is a Safety Class 2 device. It is very important to maintain a 6mm clearance with all possible conducting parts (housing etc.) and cables. All parts enclosed by the RED thick line below carry hazardous voltages. This includes parts on the top and the bottom of the board. When the UcD3xMP is mounted in a tight space there needs to be at least 6mm clearance or a layer of insulation with a minimum thickness of 0.5mm between the top of the transformer and the housing. Only use insulated spacers in the hatched area.



Instructions For Installation

Warning: To reduce the risk of fire or electric shock, do not expose this apparatus to rain or moisture.

Warning: Disconnect the unit from the mains and allow all capacitors to discharge for 10 minutes before handling it.

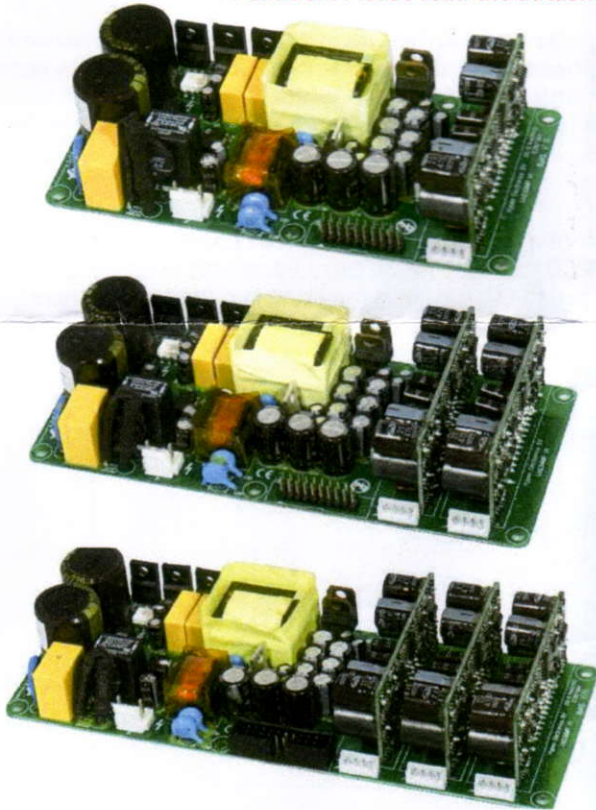


This symbol indicates the presence of hazardous voltages at accessible conductive terminals on the board. Parts that are not highlighted in red (picture above) may carry voltages in excess of 45VDC!

1. Read these instructions.
2. Keep these instructions.
3. Heed all warnings.
4. Follow all instructions.
5. Do not use this apparatus near water.
6. Protect the power cord from being walked on or pinched particularly at plugs, convenience receptacles, and the point where they exit from the application.
7. Only use attachments/accessories specified or approved by the manufacturer.
8. Unplug this apparatus during lightning storms or when unused for long periods of time.
9. Refer all servicing to qualified service personnel. Servicing is required when the apparatus has been damaged in any way, liquid has been spilled or objects have fallen into the apparatus, the apparatus has been exposed to rain or moisture, does not operate normally or has been dropped.
10. This product is to be used with Hypex amplifier modules only.
11. Only the ready-made cable sets provided by Hypex may be used for external wiring of the UcD3xMP.
12. Don't run any cables across the top or the bottom of the UcD3xMP. Apply fixtures to cables to ensure that this is not compromised.
13. Observe a minimum distance of 6mm maintain clearance with all possible conducting parts (housing etc.). All parts enclosed by the dotted line below carry hazardous voltages. This includes parts on the top and the bottom of the board. When the UcD3xMP is mounted in a tight space there needs to be at least 6mm clearance or a layer of insulation with a minimum thickness of 0.5mm between the top of the transformer and the housing.
14. Natural convection should not be impeded by covering the UcD3xMP (apart from the end applications housing).

High Efficiency Self Contained Amplifier Module

! Caution: Please read the datasheet for more detailed information



Highlights

- High efficiency
- Universal input voltage range
- Extremely small form factor
- Low EMI
- 10W standby SMPS

Features

- Advanced over current protection
- Remote controlled operation
- Low weight: UcD32MP=0,2kg/
UcD34MP=0,25kg/ UcD36MP=0,3kg
- Fitted with 1, 2 or 3 UcD[®]32 modules

Applications

- Stereo or multichannel audio systems based on our UcD[®]32 module
- Active loudspeakers

Description

The UcD3xMP is a high efficiency Safety Class 2 multichannel mains powered UcD module. The UcD3xMP integrates a low power (Max. 10W) standby SMPS, The main power supply is triggered for normal operation or latched off in case of a critical fault via in built-in actuators. The UcD3xMP is optimized from the first phase of design to final implementation to realize the low EMI signature required of the most demanding audio applications.

Absolute maximum ratings

Correct operation at these limits is not guaranteed. Operation beyond these limits may result in irreversible damage.

Item	Symbol	Rating	Unit
Input voltage	V _{line}	270	Vac
Air Temperature	TAMB	50	°C

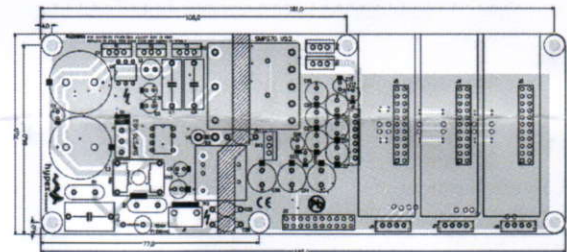
Recommended Operating Conditions

Item	Symbol	Min	Typ	Max	Unit
High Line Input Voltage	V _B	180	230	264	Vac
Low Line Input Voltage	V _{B,FP}	90	115	132	Vac

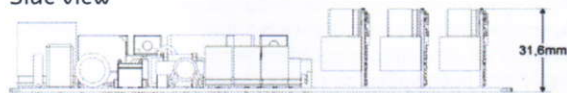
1) Unit will shut down when TSINK exceeds 95° due to thermal protection

Dimensions

Top view



Side view



Item	Dimensions (l x w x h)
UcD32MP	143x70x31,6mm
UcD34MP	165x70x31,6mm
UcD36MP	187x70x31,6mm